

CAST IRON

## Pre-assembled Remote Sink / Drain System

**1/3**  
HORSEPOWER  
MOTOR

With Vertical Float Switch

### PUMP FEATURES

- Energy efficient 1/3 HP split capacitor motor. Lower amp draw, runs cooler, lasts longer
- Solid cast iron pump base & housing. No plastic parts to crack or break
- Corrosion resistant, powder coated epoxy finish
- Hermetically sealed, oil cooled motor for long pump life
- Non-clogging stainless steel impeller for ultimate durability & corrosion resistance
- 1-1/2" NPT discharge
- Handles up to 3/8" solids
- Automatic operation with vertical float switch
- Float switch features a piggyback plug which allows for manual or automatic operation
- Motor is thermally protected with automatic reset thermal protector
- Stainless steel motor shaft
- Carbon/ceramic/stainless steel mechanical shaft seal
- Upper and lower permanently lubricated ball bearings
- Stainless steel fasteners
- Every unit is 100% pressure tested

### BASIN FEATURES

- Tough polyethylene structural foam construction
- Gasket sealed liquid and airtight cover with 8 bolts
- 1-1/2" Inlet, discharge & vent

**PREASSEMBLED FOR EASY INSTALLATION**

ENERGY EFFICIENT  
**SPLIT CAPACITOR MOTOR**

**5 YEAR**  
LIMITED WARRANTY





**1/3**  
HORSEPOWER  
MOTOR

CAST IRON  
**Pre-assembled Remote Sink / Drain System**

**Application**

Ideal for home wastewater removal from wet bars, laundry tubs, utility and beautician sinks, water softeners and for condensate removal from dehumidifiers.

**Motor Specifications**

Horsepower	1/3 HP
Voltage	120
Amps	4.1
Hertz	60 Hz
Phase	Single
RPM	3450 RPM
Motor Type	Permanent Split Capacitor (PSC)
Insulation	Class A
Circuit Requirements	15 amp (min) individual circuit
Duty Rating	Continuous*
Shaft Seal	Carbon/ceramic and stainless steel
Motor Shaft	Stainless Steel
Upper Motor Bearing	Ball Bearing
Lower Motor Bearing	Ball Bearing
Cooling	Oil cooled
Motor Protection	Auto reset thermal overload protector

\*For continuous operation, the water depth must be at least 6" to prevent the motor from overheating.

**Pump Specifications**

Discharge Size	1-1/2" NPT
Cord Length	10'
Cord Type	SJTW, UL listed, 3-wire, 18 gauge
Pump Housing	Cast iron
Pump Base	Cast iron
Impeller Material	Stainless steel
Impeller Type	Non-clogging
Gasket	Buna-N
Solids Handling	3/8" spherical
Liquid Temp. Range	32°- 120° F
Operation	Automatic or non-automatic
Fasteners	Stainless steel
Max Flow Rate	46 Gallons per minute
Maximum Head	25 feet
Max Pressure	10.8 psi
Weight	17.0 lbs

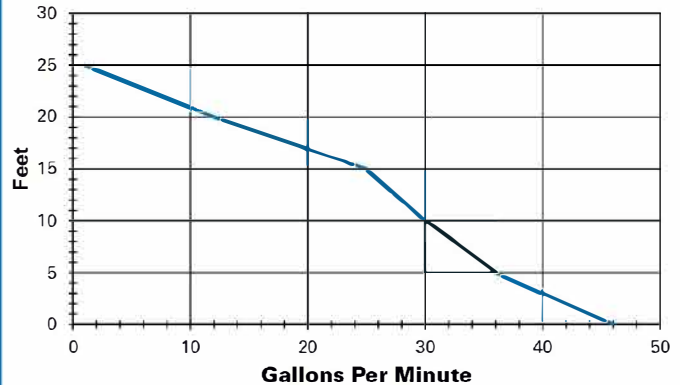
**Automatic Switch Specifications**

Type	SJE Rhombus Vertical Master II
Switch on point	6"
Switch off point	2"
Material	High impact PVC
Cord Length	10'
Cord Type	SJOW, UL listed, 2-wire, 18 gauge

**Basin Specifications**

Construction	Polyethylene structural foam
Capacity	6 gallons
Seal	PVC - reusable
Inlet Size	1-1/2"
Discharge Size	1-1/2"
Vent Size	1-1/2"

**Performances**



Discharge Height	0'	5'	10'	15'	20'	25'
Gallons Per Minute	46	36	30	25	12	1
Gallons Per Hour	2760	2160	1800	1500	720	60

**Dimensions**

