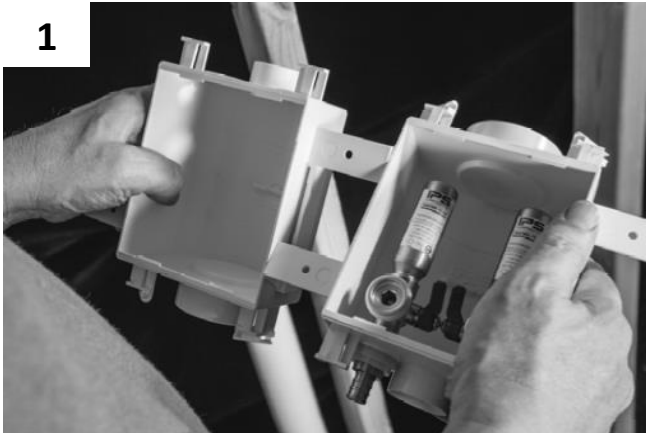
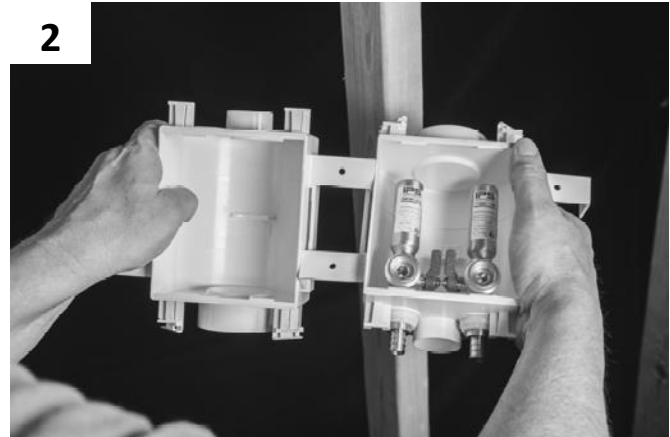


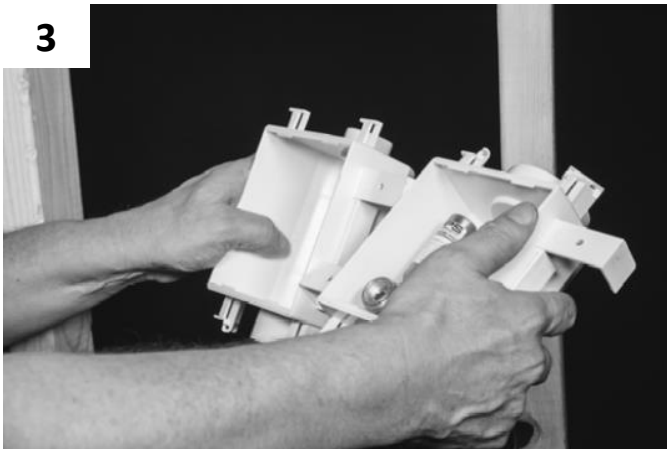
# Installation / Installation / Instalación



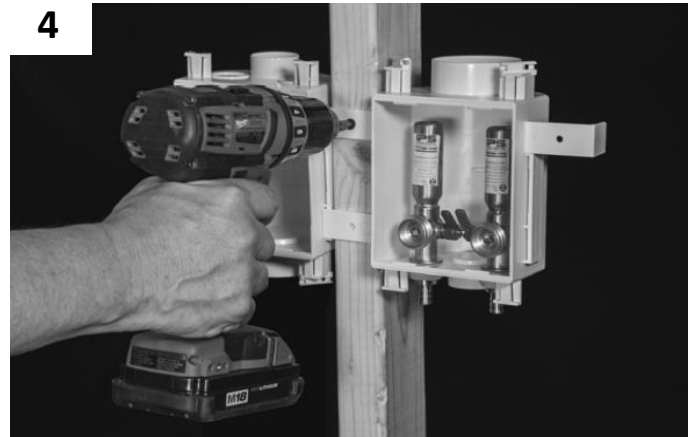
To attach multiple boxes, hold boxes at an angle. If installing a single box system skip to step 4a.



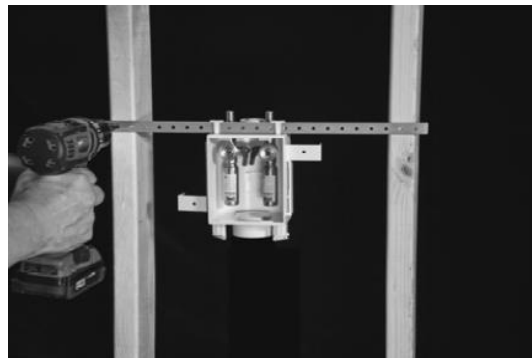
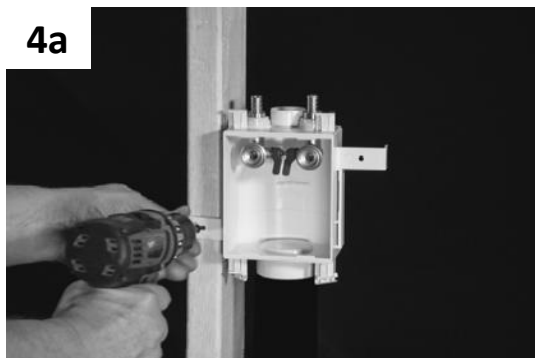
Simply slide integrated mounting flanges into opposing box



Twist to secure.

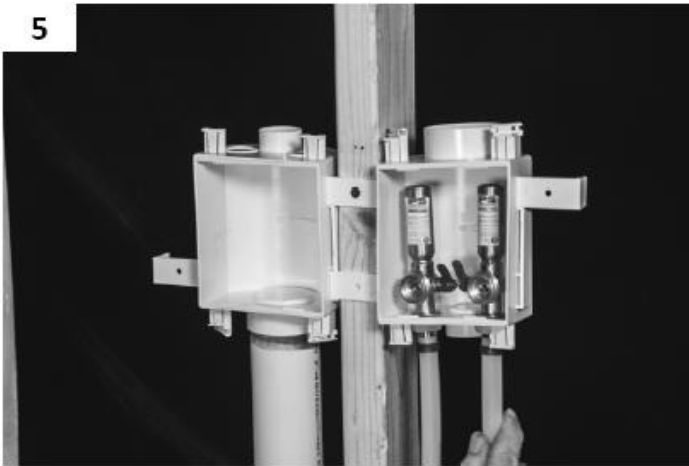


Straddle the stud and secure the box thru the integrated flanges' screw hole. For additional securement, insert nails through nail slots.



Determine box configuration and secure with one of the above methods.

## Installation / Installation / Instalación



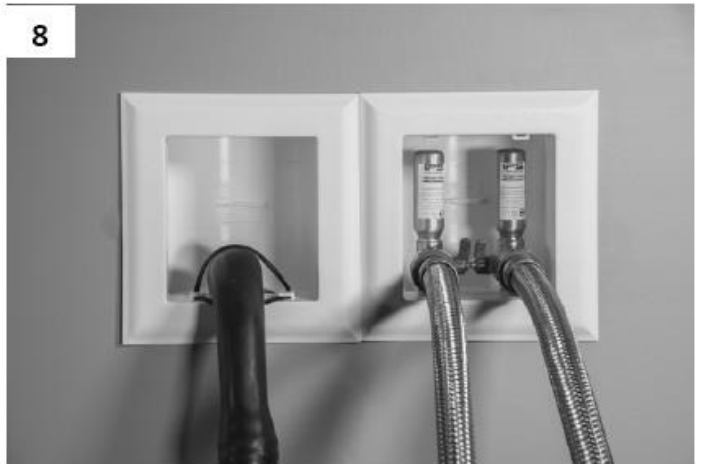
Install drain line using proper MAINLINE® cement (PVC/ABS) and connect supply lines. If soldering, be sure to open valves first and **DO NOT** allow flame to touch the box.



Test supply lines for leaks. Test drain line for leaks after solvent cement is fully cured. Remove test cap if no leaks are found.



Snap the frames into the boxes after the wall has been finished.



Attach supply hose(s) and drain hose securing to integrated tie down slots.