



FloodStop by OnSite PRO™

Leak Detection & Automatic Water Shut-off System

Water Heater Kit - FS3/4NPT FS1/2NPT
FS1/4C FS3/8C FS1NPT FS1.25NPT

Installation and Operating Manual



© 2012 OnSite PRO Inc.

FloodStop Water Heater Kit

FloodStop by OnSite PRO™

Congratulations on your purchase of a FloodStop by OnSite PRO™ electronic water leak detection and automatic water shut-off kit for water heaters. This product has been designed to give you years of reliable service and minimize home water damage by detecting water leaks and automatically shutting off the water supply.

To ensure proper installation and to maximize the performance of your FloodStop water leak detection system, please read this manual thoroughly.

PLEASE READ CAREFULLY BEFORE PROCEEDING:

If a leak is detected, the FloodStop Valve will shut off the water going to the water heater. This will stop the continuous flow of water from the water supply to the water heater. However, all or some of the water that is already in the water heater may still leak out onto the floor.

NOTE: This unit was shipped with an installation and operating manual that contains important information about its operation. If you are installing this unit for use by others, we recommend you leave this manual – or a copy of it – with the user.

Water Heater Kit - Model FS3/4NPT

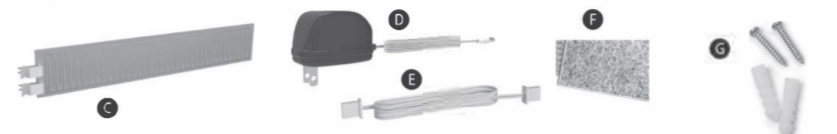
FEATURES:

- Control Panel has easy to read, lighted function buttons
- AC Power with battery backup – For continued operation in the event of power outages
- Solid brass, full port motorized ball valve for dependable, long lasting performance
- Valve automatically shuts off the water supply when a leak is detected
- Automatic monthly maintenance cycling of the valve to ensure reliable operation
- Valve can be opened and closed with the touch of a button
- Activates an audible alarm when a leak is detected
- Mute button to silence the audible alarm
- Can be reset and reused continuously with the touch of a button

- Can be tested at any time with the touch of a button
- Can accommodate additional water leak sensors
- 1 Year Limited Warranty

This Package Contains:

- A (1) FloodStop Motorized Brass Valve (3/4" FIP x 3/4" MIP)
- B (1) Control Panel
- C (1) Leak Sensor with Paper Sleeve
- D (1) AC Adaptor
- E (1) Wire Harness
- F (1) Hook & Loop Mounting Pad
- G (2) Mounting Screws with Anchors



Check to make sure everything in the package matches the Contents Listing above. Read the instructions thoroughly before installing or operating the FloodStop system.

Warning: Do not put finger(s) inside FloodStop Valve. Risk of serious injury may occur. Caution: Do not grip plastic motor drive for leverage when tightening FloodStop Valve.

Preparation

CAUTION: Make sure the FloodStop Valve is not connected to the adaptor fitting(s) when soldering.

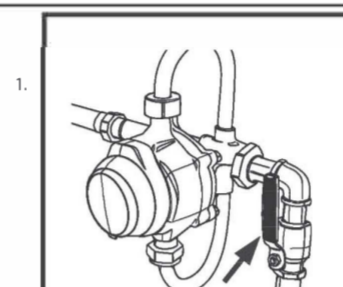
- WARNING:
- For use with water only.
 - Do not install on gas line.

STOP: You may need to purchase additional fittings to install the FloodStop Valve. If you are not sure how to install the FloodStop Valve to your existing water line, we recommend that you contact a licensed Plumber.

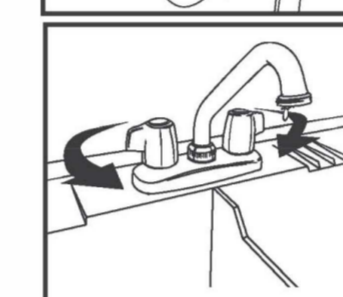
Installation

1. Shut off main water supply valve

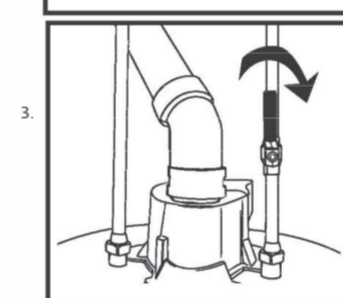
Step 4 instructs you to install the FloodStop Valve (3/4" FIP x 3/4" MIP) between the rigid water line coming off the manual cold water valve and the water heater. Most rigid lines will be copper. Evaluate your line and determine which size adaptor fitting you will need (the most common one will be 3/4" solder x 3/4" MIP). Then determine what size union you will need between the FloodStop Valve and the water heater. Note that in some cases you can use a flexible or corrugated water heater connector in place of a union.



2. Open faucet nearest water heater to relieve water pressure.

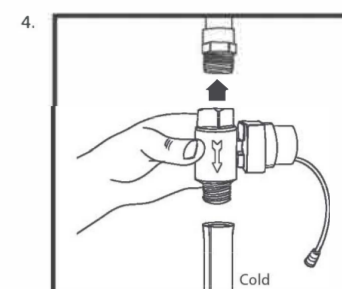


3. Shut off the manual cold water valve that supplies water to the water heater. Note that the top of the water heater will usually be marked "Cold" or "Inlet" at the point where the cold water line is connected.



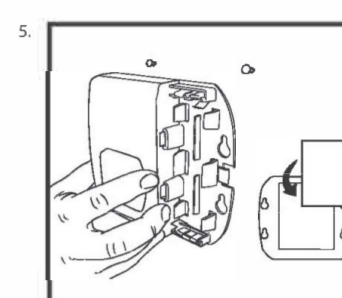
4. Position the FloodStop Valve so that the arrow on the side of the valve is pointing to the water heater. Install the FloodStop Valve between the rigid water line coming from the manual cold water valve and the water heater.

NOTE: The FloodStop Valve should be installed within 2 feet of the water heater so that the Leak Sensor can lay flat on the floor.

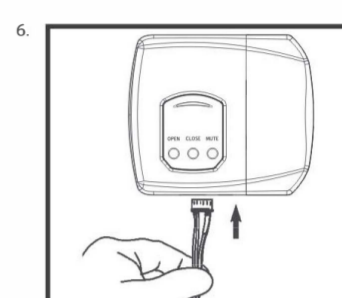


5. Mount the FloodStop Control Panel in an easily accessible location within 30 inches of the LeakSmart Valve. You may mount the panel using the screws and anchors or Hook & Loop Mounting Pad provided. When using the Hook & Loop Mounting Pad, make sure the adhesive is put on a clean, dry surface.

NOTE: Depending on the location you pick, and the distance between the Control Panel and the FloodStop Valve, you may need to purchase a LeakSmart Control Panel to Valve Extension Wire, Model # CEXT-09 (available where you purchased your FloodStop System).

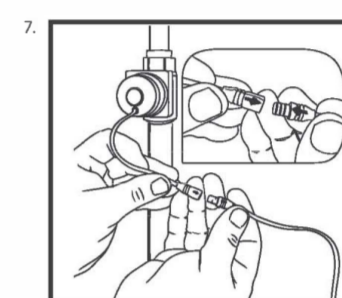


6. With the contacts of the wire harness connector facing you, plug the 6-pin connector end of the Wire Harness into the bottom of the Control Panel.



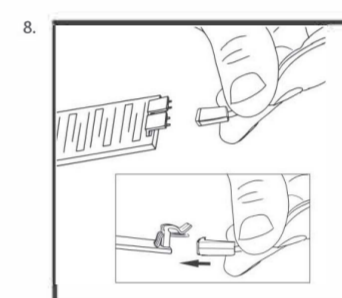
7. Take the short round wire coming from the Control Panel and plug it into the wire coming from the FloodStop Valve. Make sure the arrow on the side of each plug lines up with each other.

NOTE: The Leak Sensor comes with a paper sleeve. If the Leak Sensor is going to be placed in a metal water heater pan, make sure you leave the paper sleeve on. If the Leak Sensor makes contact with metal, it will signal the FloodStop Valve to shut off. The paper sleeve acts as a barrier between the Leak Sensor and the metal. When the paper sleeve becomes wet, it will signal the FloodStop Valve to shut off. If the Leak Sensor will not be contacting metal, you may remove the paper sleeve.



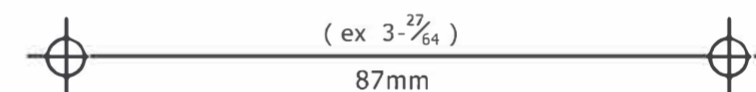
8. Connect plug on end of long flat wire coming from Control Panel to either set of prongs on the Leak Sensor, pushing until plug snaps in place. Then place Leak Sensor on the floor next to the water heater, preferably on the side that is in line with the floor drain.

NOTE: Additional Leak Sensors can be connected together for added protection. For additional Leak Sensors, purchase FloodStop Water Leak Sensor, Model # XS-01 (available where you purchased your FloodStop System).



CAUTION: Do not place Leak Sensor or cord in a walk way or other location that may cause someone to trip and fall.

Controller Mounting Template



Notice

- Not to be used on Fire Protection Systems
- Four AA batteries must be used as backup or system will beep continually.

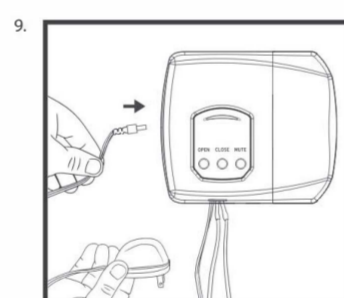
Pressure Drop Data:

The maximum pressure drop for this device is 2 psi at a flow rate of 5.5 gpm for NPS-3/4 and larger.

9. Plug the pin on the end of the AC Adaptor cord into the bottom of the Control Panel, and then plug AC Adaptor into a wall outlet. Green indicator lights will start to flash, showing you have power. Note that a red low battery indicator light will also flash about every 30 seconds, and the unit will beep once a minute until the batteries are installed.

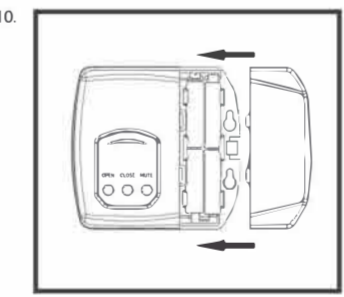
NOTE: If a nearby wall outlet is not available you will need to purchase a thin low voltage FloodStop™ AC Adaptor Extension Wire™ Model # WAE-09 (available where you purchased your FloodStop System). This wire extends the length of the AC Adaptor cord.

CAUTION: Do not plug the AC Adaptor into an extension cord.



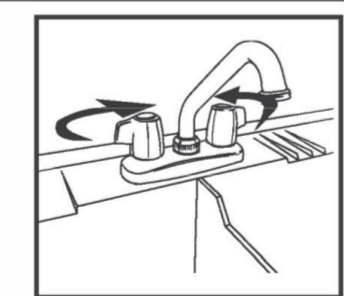
10. FloodStop has a battery backup system that allows the unit to continue working in the event that you have a power outage. To set up the backup system, open the front of the Control Panel and install 4 fresh AA alkaline batteries (batteries not included). The low battery indicator light will now stop flashing and the beep will stop.

CAUTION: Replace batteries once a year or sooner as necessary. If batteries need to be changed sooner, a red low battery indicator light will flash and a beep will sound.



Installation

11. Shut off the previously opened faucet and turn on both valves that were shut off in steps 1 and 3. Check for leaks. Note that a green status light on the Control Panel will indicate whether the FloodStop Valve is open or closed.



How to Operate your Control Panel

1. Top button opens FloodStop Valve
2. Middle button closes FloodStop Valve
3. Bottom button mutes the audible alarm that sounds when a leak is detected



Testing Your FloodStop System

1. Push the Open button to make sure FloodStop Valve is open.
 - When the FloodStop Valve is opening or closing, you will hear the valve motor operating for a few seconds.
2. Saturate a rag with water and squeeze over Leak Sensor, or dip the Leak Sensor into a small bucket of water. Once the Leak Sensor is wet, it will signal the FloodStop Valve to close, then an audible alarm will sound and a red light will flash.
 - Push the Mute button to silence the alarm, and note that the red light will continue to flash. This means the FloodStop Valve is closed, and will remain closed until you push the Open button.
 - Before the FloodStop Valve can be opened, the Leak Sensor needs to be dry. There is no need to unplug the AC Adaptor when drying off the Leak Sensor.
 - The water test can be done with the paper sleeve still on the Leak Sensor. Note that the paper sleeve is reusable, but once it gets wet you will need to let it air dry flat before placing it back on the Leak Sensor.

Helpful Hints

- If the Leak Sensor Paper Sleeve is misplaced or becomes unusable, a paper towel can be used in its place.
- The Leak Sensor has two sets of prongs so you can connect additional Leak Sensors. This is helpful when you have the Leak Sensor placed inside a water heater pan, but also want one outside the pan to sense other leaks such as a pressure relief valve failure. You can also link them together so they are positioned at different locations around your water heater.
- Once a month, the FloodStop Valve will automatically close and open by itself. The Control Panel is programmed to run this cycle to ensure that the valve continues to function properly in the event that it needs to shut off the water.
- Hanging Wires may be tied together using twist ties (Not provided).

Troubleshooting

Problem	What to Check
Status light does not light	<ul style="list-style-type: none"> - Make sure there is power to the outlet. - Unplug AC Adaptor cord from Control Panel and plug back in. - If an AC Adaptor extension wire was used, unplug both ends and reconnect. - Make sure fresh batteries are in the Control Panel.
No water comes out of hot side of faucet	<ul style="list-style-type: none"> - Push Open button to make sure LeakSmart Valve is open. - Make sure the manual cold water valve is open. - Make sure a manual hot water valve was not accidentally closed.
No water comes out of hot or cold side of faucet	<ul style="list-style-type: none"> - Make sure main water shut-off valve is open.
FloodStop Valve does not operate	<ul style="list-style-type: none"> - Make sure both sides of Sensor are dry. - Make sure there is power to the outlet. - Unplug AC Adaptor cord from Control Panel and plug back in.

Problem	What to Check
FloodStop Valve does not operate (continued)	<ul style="list-style-type: none"> - Unplug 6-pin connector from Control Panel and plug back in. - Locate plug connection between Control Panel and FloodStop Valve. Unplug the connection and reconnect, making sure arrows on side of plugs line up. - If an AC Adaptor extension wire was used, unplug both ends and reconnect. - Make sure fresh batteries are in the Control Panel.
Leak Sensor becomes wet but FloodStop Valve does not close	<ul style="list-style-type: none"> - Unplug long flat wire from Leak Sensor and reconnect. - Make sure there is power to the outlet. - Unplug AC Adaptor cord from Control Panel and plug back in. - Unplug 6-pin connector from Control Panel and reconnect.

Problem	What to Check
Leak Sensor becomes wet but FloodStop Valve does not close (continued)	<ul style="list-style-type: none"> - Locate plug connection between Control Panel and FloodStop Valve. Unplug the connection and reconnect, making sure arrows on the side of plugs line up. - If an AC Adaptor extension wire was used, unplug both ends and reconnect. - Make sure fresh batteries are in the Control Panel.
FloodStop Valve closed but now will not open	<ul style="list-style-type: none"> - Make sure both sides of Leak Sensor are dry.
The alarm goes off for no apparent reason	<ul style="list-style-type: none"> - Leak Sensor is touching metal, or the concrete is sweating causing high humidity. Correct the problem by placing the Paper Sleeve on the Leak Sensor, or use a paper towel as a barrier.

Manual Operation of FloodStop Valve

1. Unplug the connection between the Control Panel and the FloodStop Valve.
2. Pull the plastic motor cover off the FloodStop Valve and slide it down the wire until it stops at the plug. Note that no tools are needed to remove the cover.
3. Use a marker and draw a line across the top of the plastic motor housing. This way once the motor is removed you will know how to reposition it for assembly.
4. Remove the 4 screws using a Phillips head screwdriver.
5. Place thumb and finger on plastic gear and rotate clockwise to open valve or counter clockwise to close it.

This equipment has been tested and found to comply with the limits for a Class B digital device, pursuant to part 15 of the FCC Rules. These limits are designed to provide reasonable protection against harmful interference in a residential installation. This equipment generates, uses and can radiate radio frequency energy, and if not installed and used in accordance with the instructions, may cause harmful interference to radio communications. However, there is no guarantee that interference will not occur in a particular installation. If this equipment does cause harmful interference to radio or television reception, which can be determined by turning the equipment off and on, the user is encouraged to try to correct the interference by one or more of the following measures:

- Connect the equipment into an outlet on a circuit different from that to which the receiver is connected.
- Consult the dealer or an experienced radio/TV technician for help.

FloodStop Water Heater Kit

1 Year Limited Warranty

OnSite PRO Inc. warrants the enclosed FloodStop product to be free from defects in materials or workmanship, under normal use and service, for a period of one (1) year from the date of purchase. If at any time during the warranty period the product is determined to be defective, OnSite PRO Inc. shall repair or replace it (at our option). The warranty is limited to defective parts as stated. All costs of removal and installation of the FloodStop product, including the replacement of warranty parts, are the responsibility of the purchaser. The manufacturer shall not be liable for incidental, consequential, or special damages arising at, or in connection with product use or performance, except as may otherwise be accorded by law. Some states do not allow the exclusion limitation of incidental or consequential damages, so the limitation may not apply to you. Any damage to this FloodStop product as a result of misuse, abuse, neglect, accident, improper installation, or any use violating the instruction manual furnished by us will void this warranty. This warranty does not cover damages or loss caused by defects, and the owner's use of the FloodStop product confirms the understanding that this product does not constitute an insurance policy, and is only a loss mitigation product used to reduce the risk of water damage.

To obtain warranty service, call our Customer Service Department at 1-800-667-4833, or e-mail us at sales@getfloodstop.com. You may also send the product and original dated receipt, prepaid US postage to: OnSite PRO Inc 28222 Shadowland Circle, Modjeska Canyon, CA 92676, Attention: Customer Service.





WARRANTY INFORMATION

Mainline products will be covered by IPS Corporation's limited warranty. It is as follows:

IPS Corporation ("IPS Corp.") warrants to all original purchasers of IPS Corp. products that all new IPS Corp. products shall be of good quality and free from defects in material and workmanship for the product's shelf life. If any IPS Corp. product becomes defective or fails to conform to this written limited warranty under normal use and storage conditions, and if the original purchaser complies with the terms of this limited warranty, then IPS Corp. will, without charge, replace the nonconforming product.

This limited warranty shall extend to all products manufactured and sold by IPS Corp. However, this limited warranty shall not extend to, nor shall IPS Corp. be responsible for, damages or loss resulting from accident, misuse, negligent use, improper application, or incorporation of IPS Corp. products into other products. In addition, any repackaging of IPS Corp. products also shall void the limited warranty provided herein. Hajoqa locations can contact their IPS Sales Agents or IPS Customer Service directly to report suspected defective products.

Specific Brand Warranty Statements:

WELD-ON. All IPS products are intended for use by skilled individuals at their own risk. Any suggestions or recommendations we give are based on information and results from our in house laboratory testing. Therefore, installers should verify for themselves that they can make satisfactory joints under varying conditions, making sure that installation method and products used are suited for their application. Please contact us for additional information or instruction media. Since specific use, materials and handling are not controlled by IPS Corporation; our warranty is limited to the replacement of defective IPS products.

WATER-TITE & GUY GRAY. Water-Tite Product's warranty shall be limited to replacement or credit not to exceed the original invoice price. IPS shall not be liable for installation or labor costs. All IPS merchandise is guaranteed against defects in materials or workmanship for a period of one year from the date of purchase. Determination of a product's condition (defective or not) shall remain the sole right of IPS Corporation and any such determination will be final. **STUDOR.** All Studor products carry a limited lifetime warranty which guarantees against defects resulting from faulty workmanship or materials. If any such product is found to be defective by reason of faulty workmanship or material, upon written notice and return of the product(s), the defective product will be replaced by Studor free of charge, including shipping charges for the replacement product(s). Claims for labor costs and other expenses required to replace such defective product(s) or to repair any damage resulting from the use thereof will not be allowed by Studor. Our liability is limited to the price paid for the defective product(s). Studor will not be bound by any warranty other than above set forth, unless such warrant is in writing.

FLOODSTOP. All FloodStop products carry a warranty, which shall be limited to replacement or credit not to exceed the original invoice price. IPS shall not be liable for installation or labor costs. All FloodStop merchandise is guaranteed against defects in materials or workmanship for a period of one year from the date of purchase. Determination of a product's condition (defective or not) shall remain the sole right of IPS Corporation and any such determination will be final. **TOUGH PANS DRY LIFT & PRO SERIES -** IPS Corporation ("IPS Corp.") warrants to all original purchasers that Tough Pans Dry Lift and Pro Series products shall be of good quality and free from defects in material and workmanship. Tough Pans Dry Lift and Pro Series pans are covered under this warranty for the "life of the current water heater system"* on which they are installed. If any IPS Corp. product becomes defective, or fails to conform to this written limited warranty under normal use, and if the original purchaser complies with the terms of this limited warranty, then IPS Corp. will, without charge, replace the nonconforming product. However, this limited warranty shall not extend to, nor shall IPS Corp. be responsible for, damages or loss resulting from accident, misuse, negligent use, improper application, or incorporation of IPS Corp. products into other products. In addition, any repackaging of IPS Corp. products also shall void the limited warranty provided herein.

*Tough Pan and new water heater must be purchased within 30 days of each other. Receipts must be furnished with the claim.



TEST-TITE. IPS Corporation warrants each pneumatic test plug to be free from defects in materials and workmanship for a period of THREE (3) Years from the date of manufacture, under normal use and service. This warranty does not apply to any goods which have been subjected to misuse, mishandling, misapplication, neglect or repair other than by the manufacturer. If any pneumatic test plug is returned to IPS Corporation in Collierville, TN and if upon examination, IPS Corporation finds to its satisfaction that such pneumatic test plug is defective, IPS Corporation will replace the product at no cost. IPS Corporation is not responsible for any special, indirect, incidental or consequential damages (including, but not limited to damages for loss of business profits, opportunity, information, interruption or other pecuniary loss), arising out of or relating to the use, abuse or misuse of Test-Tite products, even if IPS Corporation has been advised of the possibility of such damages IPS Corporation's liability to the customer or any third person or party in all instances shall be limited to the actual purchase price of the defective Test-Tite product. The warranty herein made is in lieu of other warranties, expressed, implied in fact or implied by law and without the generality of forgoing disclaimer, is specifically in lieu of all implied warranties of quality or fitness for purpose. Except as expressly set forth herein, the customer assumes the entire risk as to the acceptability, quality and performance of the Test-Tite products and any decision made, or actions taken with respect to such Test-Tite products.

TRUEBRO. Truebro warrants its products against defective material and manufacture, (but not defective installation), for one year after installation. Truebro's liability under this warranty shall be limited to the repair or replacement of the defective product. There shall be no other remedy available, including without limitation, recovery for incidental or consequential damages, injury to person or property, or any other incidental or consequential loss. The preceding warranty shall be IN LIEU of any other warranty, express or implied, including without limitation, any implied warranty of MERCHANTABILITY or fitness for a particular purpose. Some states do not allow the exclusion or limitation on the period of warranty or incidental or consequential damages.

AB&A. AB&A products are carefully inspected for manufacturing defects; however, it is not always possible to detect hidden defects. Said products are warranted only to the extent that Seller will replace without charge, products proved to have manufacturing defects within 6 months of the date of delivery thereof and provided Seller has been given an opportunity to inspect the product alleged to be defective and the installation or use thereof. NO WARRANTY IS INCLUDED AGAINST ANY EXPENSE FOR REMOVAL, REINSTALLATION OR OTHER CONSEQUENTIAL DAMAGES ARISING FROM ANY DEFECT. THE WARRANTIES SET OUT ABOVE ARE THE ONLY WARRANTEIS MADE BY SELLER AND ARE EXPRESSLY IN LIEU OF ALL OTHER WARRANTIES, EXPRESS OR IMPLIED, INCLUDING THE WARRANTIES OF MERCHANTABILITY AND FITNESS OR A PARTICULAR PURPOSE.

CAUTION: Threaded joints should not be excessively tightened. Use thread compounds specifically intended either for ABS or PVS assembly, as the case may be, DO NOT use linseed oil putty products for thread lubricant. Many oil-based putty compounds are not compatible with plastics.

SPECIAL FINISHES: Limited Warranty: IPS Corporation warrants that its products are free from defects in materials and workmanship for a period of 6 months. All PVD finishes (including Satin, Nickel, and Polished Brass), are warranted for 15 years against corrosion, tarnishing or discoloring. This warranty does not cover damage due to normal wear and tear, misuse, hard water, improper storage, improper installation, and improper maintenance.

Weathered finishes and uncoated finishes such as Oil Rubbed Bronze and Venetian Bronze naturally change over time. Weathered and uncoated finishes are not warranted. Chrome Plated Drain finishes on kitchen, bath, or lavatory drains are warranted for (1) year from date of purchase by the original purchaser.

Claims: All claims for defective products, shipment shortages, and billing errors must be made within one week after receipt of goods. Claims should be submitted to your authorized dealer for local manufacturer representative. To locate your local manufacturer representative, please call 1-800-888-8312.

Installation: Decorative items should be the last items to be installed after cleaning of the surrounding areas.

Care and Cleaning of Special Finishes: Use a soft cloth with water to clean. Do not use Abrasives, Caustic cleaning agents or acid-based products, for they may permanently damage the finish and void the warranty.

